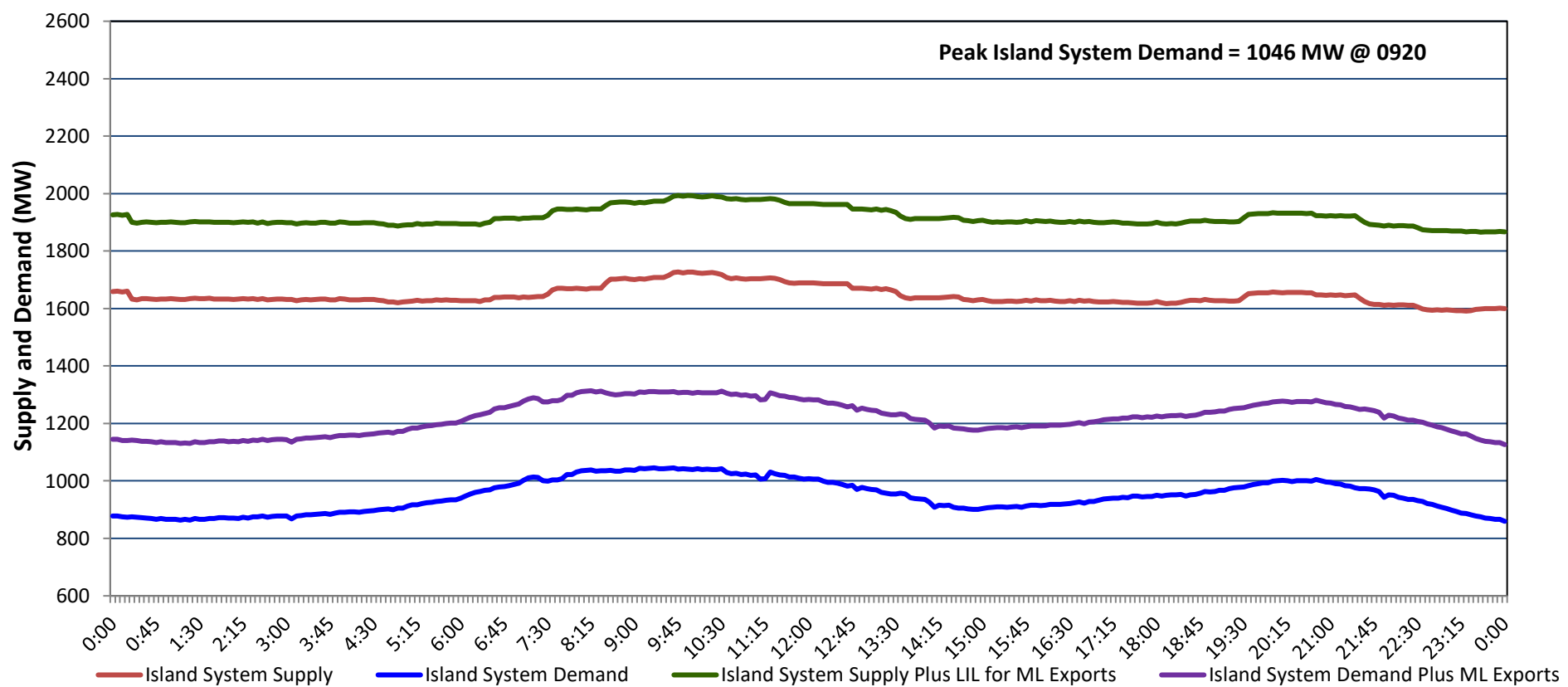


Newfoundland Labrador Hydro (NLH) Supply and Demand Status Report Filed Monday, March 24, 2025

Section 1 Island Interconnected System - Supply, Demand & Exports Actual 24 Hour System Performance For Sunday, March 23, 2025



Island Supply Notes For March 23, 2025

- A As of 0952 hours, March 11, 2025, Granite Canal Unit available at 32 MW due to forced derating (40 MW).
- B As of 0915 hours, March 16, 2025, Bay d'Espoir Unit 6 unavailable due to planned outage (76.5 MW).
- C As of 0902 hours, March 20, 2025, Holyrood Unit 3 available but not operating 130 MW (150 MW).
- D As of 1601 hours, March 21, 2025, Holyrood Unit 1 available but not operating (170 MW).
- E **At 1440 hours, March 23, 2025, Paradise River Unit unavailable due to planned outage (8 MW).**

Section 2 Island Interconnected System - Supply, Demand & Outlook

Mon, Mar 24, 2025	Island System Outlook ²	Seven-Day Forecast	Island System Daily Peak Demand (MW)	
			Forecast ⁸	Adjusted ⁶
Island System Supply: ⁴ 1,789 MW NLH Island Generation: ^{3,7} 1,280 MW NLH Island Power Purchases: ⁵ 120 MW NP and CBPP Owned Generation: 220 MW LIL/ML Net Imports to Island: ⁹ 169 MW 7-Day Island Peak Demand Forecast: 1,285 MW		Monday, March 24, 2025	1,195	1,091
		Tuesday, March 25, 2025	1,285	1,180
		Wednesday, March 26, 2025	1,140	1,037
		Thursday, March 27, 2025	1,245	1,141
		Friday, March 28, 2025	1,265	1,160
		Saturday, March 29, 2025	1,210	1,106
		Sunday, March 30, 2025	1,280	1,175

Island Supply Notes For March 24, 2025

- F **At 0106 hours, March 24, 2025, Holyrood unit 1 unavailable due to forced outage (170 MW).**

- Notes:
1. Generation outages for running and corrective maintenance are included. These are not unusual for power system operations. They generally do not impact customer supply. Hydro schedules outages to system equipment whenever possible to coincide with periods when customer demands are low and sufficient supply reserves are available. However, from time to time equipment outages are necessary and reserves may be impacted.
 2. As of 0800 Hours.
 3. Gross continuous unit output.
 4. Gross output from all Island sources (including Note 3).
 5. NLH Island Power Purchases include: ML Imports, Exploits Generation, Rattle Brook, Star Lake, Wind Generation and capacity assistance (when applicable).
 6. Adjusted for interruptible load and the impact of voltage reduction when applicable.
 7. Due to limitations inherent in the design of combustion turbines, the output of combustion turbines may be reduced in the event that ambient temperatures exceed the threshold required for full rated output. This threshold is dependent on the design of each turbine.
 8. Does not include ML Exports.
 9. LIL Import sunk in the Island System. Actual LIL flows will be restricted by various system conditions including, but not limited to, Island Load, ML Exports and Avalon Unit status.

Section 3 Island Peak Demand and Exports Information Previous Day Actual Peak and Current Day Forecast Peak

Sun, Mar 23, 2025	Island Peak Demand ¹⁰	9:20	1,046 MW
	Exports at Peak		266 MW
	LIL Net Imports to Island		877 MWh
Mon, Mar 24, 2025	Forecast Island Peak Demand		1,195 MW

- Notes: 10. Island Demand is supplied by NLH generation and purchases, LIL Imports plus generation owned and operated by Newfoundland Power and Corner Brook Pulp & Paper (Deer Lake Power, DLP).